

## AWT Introduces Global AIS Service

AWT offers the latest technology in vessel tracking with the introduction of its global Automatic Identification System (AIS) service. While most current terrestrial-based AIS services provide only limited coverage nearby shorelines and ports, AWT has expanded its coverage with global satellite-based AIS data. This enables AWT to monitor maritime vessels beyond coastal regions in both a timely and cost-effective manner. AWT combines both the terrestrial-based and satellite-based AIS data to maximize the likelihood of consistent reporting from each vessel.

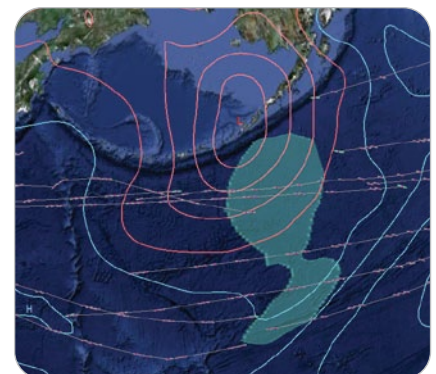
### What is the Automatic Identification System (AIS)?

The International Maritime Organization's (IMO) International Convention for the Safety of Life at Sea (SOLAS) requires AIS to be fitted aboard international voyaging ships with gross tonnage (GT) of 300 or more.

AIS is an automated tracking system used on ships for identifying and locating other vessels and is used in navigation primarily for collision avoidance. The AIS transponders automatically broadcast information, such as their position, speed and heading, at regular intervals via a VHF transmitter built into the transponder. Shipboard AIS transponders have a horizontal range that is highly variable but typically only about 35 nautical miles (NM). However, the signal has a vertical range over 200 NM, and over the past few years polar orbiting satellites have been launched that can pick up these signals. Now, with the launch of these satellites, AIS tracking is possible globally.

### Tracking Service Using AIS

When position tracking is not enough and close monitoring of vessels' ETAs is needed, customers can combine AWT Global AIS service with AWT's Tracking Service. AWT inserts the vessel's track into the AWT Route Optimization System. Using proprietary wind and wave data, vessel-specific speed down algorithms and AWT's proprietary Climatological Ship Resistance (CSR), AWT can accurately predict when the vessel will arrive at port. The vessel's ETA is continuously updated throughout the voyage as new weather or position data is received. These vessels are also included in the AWT Daily Fleet Status Report that is sent via email to quickly see if the vessel is falling behind schedule or encountering bad weather.



Satellite AIS tracks with pressure and waves shown in GlobalView.

**Benefits of AWT Global AIS Service**

- Global satellite coverage is combined with terrestrial AIS data to maximize coverage
- Tracking of vessels begins very quickly
- AIS Service can be combined with AWT voyage tracking to monitor ETAs
- When combined with AWT routing services, AIS Service allows close monitoring to improve accuracy of ETAs
- AWT GlobalView™ Fleet Management System Using AIS

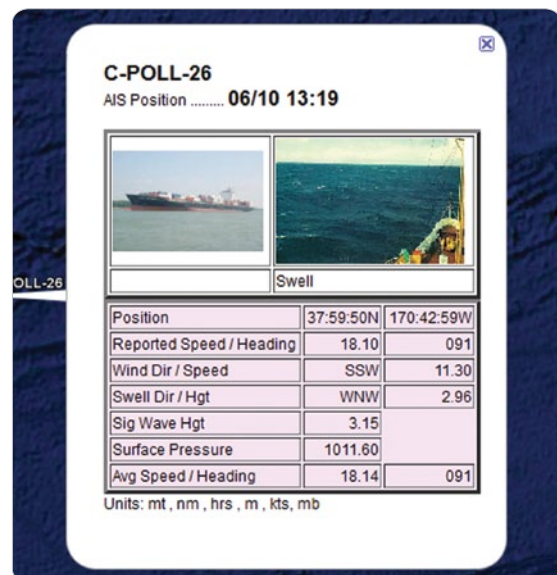
GlobalView is AWT’s new, innovative fleet management system that combines the latest industry-leading ship routing technology with Google™ Earth technology to give fleet managers a visual, easy-to-use and powerful management tool. By combining AIS reports, AWT’s voyage tracking service and GlobalView, fleet managers can closely monitor the safety, ETA and performance of their vessels.

**GlobalView Features include:**

- Customized graphical alerts to quickly determine which vessels require attention
  - Heavy weather
  - Off track
  - Under performing speed
  - ETA (compared to required ETA or laycan)
  - Tropical cyclone
- Fleet, track, vessel position and weather display
  - Scroll through time
  - Customized fleet and voyage summaries
  - Preliminary performance evaluation
  - Comprehensive voyage details
- Resources
  - Pirate attack location and type
  - Port locations and search function
  - Links to GMDSS MetArea websites
  - Active and future ECA zones
  - EU low sulfur regulated ports
  - Link to NOAA Tsunami warning site

*“AWT’s Global AIS service greatly benefits us. When combined with GlobalView, not only does it give us positioning of the entire fleet on-screen, but you get the added bonus of overlaying the weather, clouds, visibility, waves, current speeds, etc., and this list goes on. It is an invaluable source of information in a neat little package.”*

– Anthony Birch,  
Marine Assistant, Operations  
Africa Express Lines



Satellite AIS position data shown in GlobalView.

[www.awtworldwide.com](http://www.awtworldwide.com)

**AWT Worldwide**  
Headquarters  
140 Kifer Court  
Sunnyvale, CA 94086  
U.S.A.  
T: +1 408 731 8600  
F: +1 408 731 8601

**AWT New Jersey**  
T: +1 609 275 5488  
F: +1 609 750 9793

**AWT Singapore**  
T: +65 6829 7133

**AWT Shanghai**  
T: +86 21 6334 6088  
F: +86 21 6334 6085

**AWT Japan**  
T: +81 3 5211 5652  
F: +81 3 5211 5653

**AWT Europe**  
T: +44 1224 857920  
F: +44 1224 582168

**AWT Korea**  
T: +82 2 739 3464  
F: +82 2 739 3404

**AWT Germany**  
T: +49 4182 287 132  
F: +49 4182 287 133

**AWT Hong Kong**  
T: +852 2865 0282  
F: +852 2865 0228

**AWT London**  
T: +44 (0)20 3178 8356  
F: +44 (0)12 2458 2168

**AWT QuWeather**  
T: +82 2 737 7007  
F: +82 2 737 8521